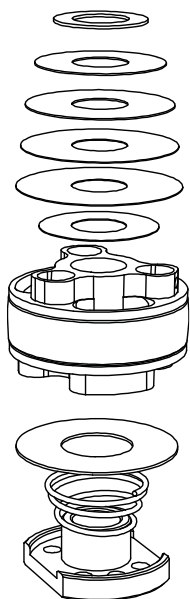


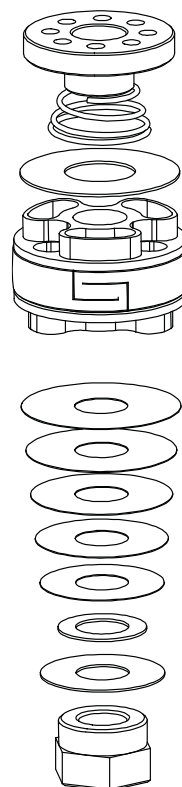


Hydraulic cartridge for 65cc

Technical data:



Compression
13x0.1
18x0.1
17x0.1
16x0.15
14x0.15
10x0.3



Rebound
18x0.1
17x0.1
16x0.1
15x0.1
14x0.1
10x0.3
14x0.25

Oil level	Compression click	Rebound click	Preload
100 mm	AP 15	AP 10	5mm
We suggest our oil CUBE			